



## Super-Magnet-Closure safe in 3-Axes



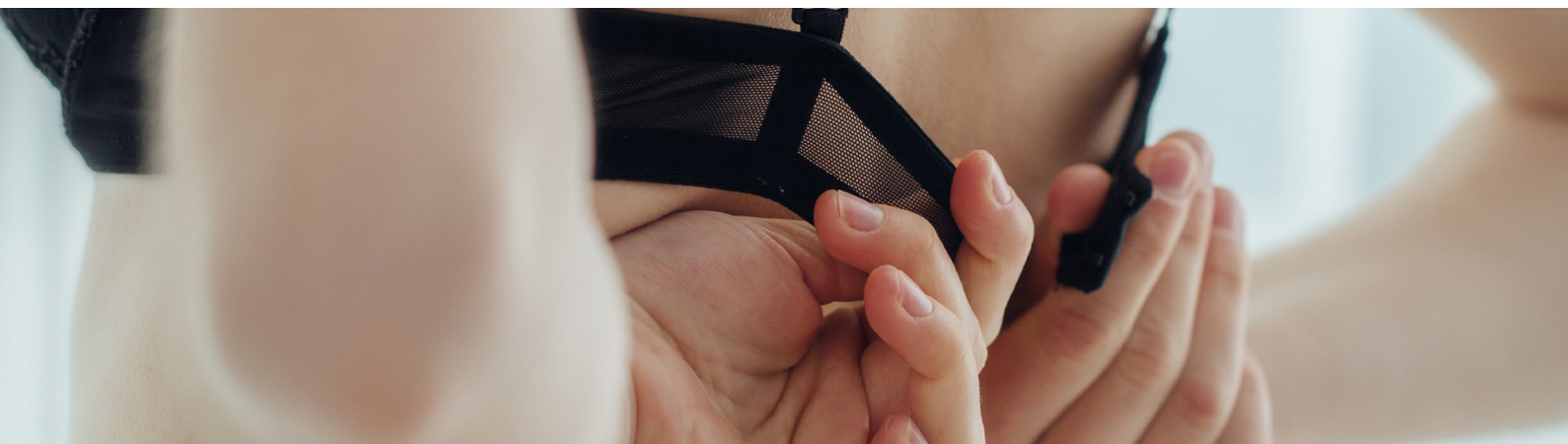
PA 080C-15  
2 adjustments



21 138 038  
1 adjustment

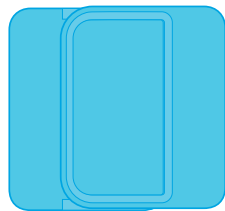
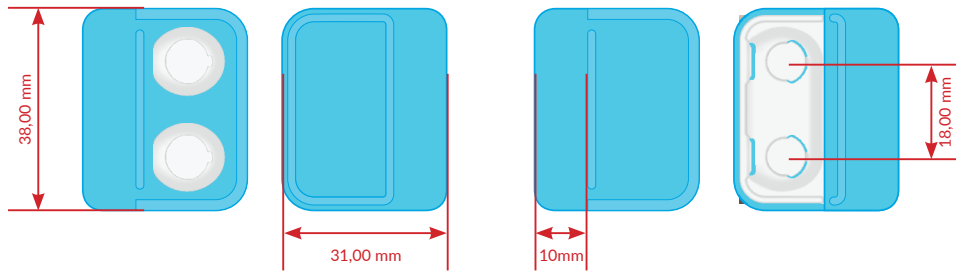
### Features

- fabric closure in microfiber PA with extra strong magnets
- intuitive to use extra locking in 3 directions
- finds automatically into the lock position
- is safely locked under wear tension
- without tension easy to open
- magnets water-proof embedded
- tensile strength 25lbs / 11.3kg

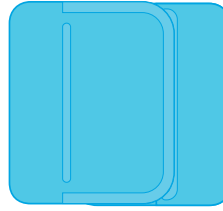


# Product Overview

21 138 038

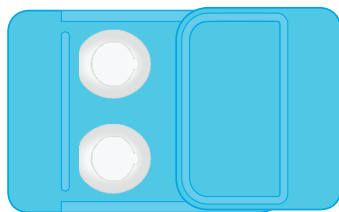
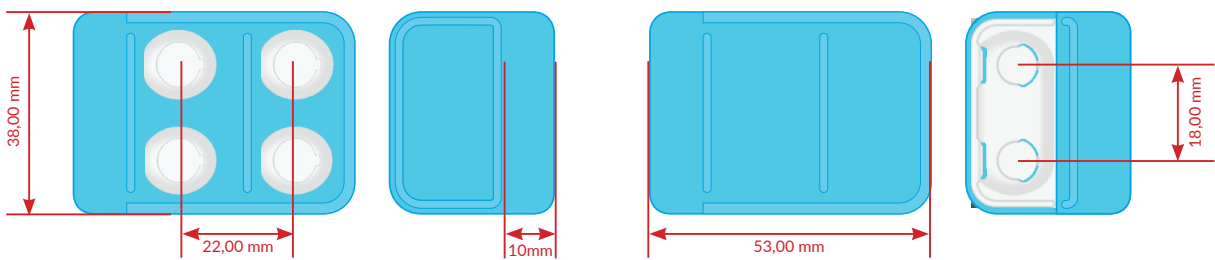


front view

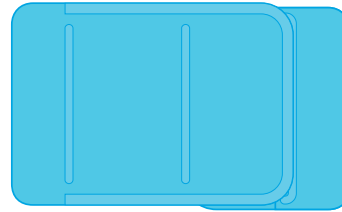


back view

PA 080C-15



front view



back view